

SHURAM OIL & GAS

LABORATORY AND CORESHEED



SHURAMGROUP.COM

1 **GEOLOGICAL CORE
STORAGE SERVICES**

2 **CONVENTIONAL CORE
ANALYSIS**

3 **PETROGRAPHIC THIN SECTION
PREPARATION & DESCRIPTION**

4 **GEOCHEMICAL
ANALYSIS**

GEOLOGICAL CORE STORAGE SERVICES

Experienced since 2008

- _Industrial Warehouse Facility
- _Cold Core Storage
- _Specialized Data Management
- _Inventory Web Access
- _Core Transportation

WWW.SHURAMGROUP.COM



CONVENTIONAL CORE ANALYSIS



— Core layout

- _Core Handling and Layout
- _Preservation
- [Core Freezing, Resination and Waxing]
- _Slabbing, Plugging and Trimming
- _Total and Spectral Gamma Ray Measurement
- _Miniperm Measurement
- _Core, Plug and SWS Photography
- [UV and White Light]
- _Soxhlet Cleaning & Dean Stark Extraction
- _CCA Analysis and Data Reporting
- _XRF



— Core Photography



— CCA Analysis

— Core skimming



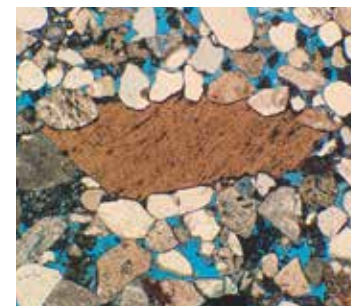
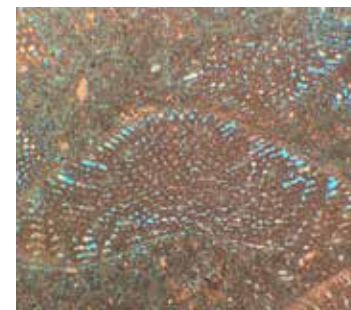
PETROGRAPHIC THIN SECTION PREPARATION AND DESCRIPTION

- _Thin sections preparation of different rock shapes such as drilling cuttings, plugs, trims, outcrops, and from any rock type, igneous, metamorphic and sedimentary (carbonates and clastics)
- _Blue Epoxy Impregnation to identify Pore Spaces
- _Dual Carbonate Staining
- _Polished & Covered Slides



— Sample Preparation

— Sample Description



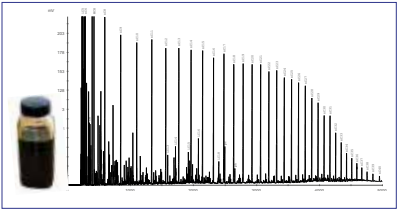
GEOCHEMICAL ANALYSIS



- _ Source Rock Analysis [TOC, TC, and % Carbonates] and Pyrolysis Screening
- _ Whole Oil Gas Chromatography including API Gravity Measurements
- _ Compositional Gas Analysis [Isotubes, Isojars, Steel Canned Cuttings]
- _ Gas Bubble Sampling and Analysis [from Well Cellar]
- _ Interpretation and Consultation Services
- _ XRF and XRD



— Source Rock screening of core and cuttings samples



— Gas chromatography of Whole oil samples



— Gas Analysis

IN COLLABORATION WITH TECHNICAL PARTNERS:

CORE DESCRIPTION,
SEDIMENTOLOGY AND
RESERVOIR QUALITY

CHEMOSTRATIGRAPHY SERVICES

Inorganic Geochemistry and
Mineralogy

ORGANIC GEOCHEMISTRY

Biomarkers Analysis and
Basin Modeling

BIOSTRATIGRAPHY AND SEQUENCE STRATIGRAPHY

Palynology, Nanno Fossils
and Micropaleontology



ABOUT SHURAM

BACKGROUND

Shuram Oil & Gas is 100% Omani owned medium enterprise, established in 1996.

Founded by Salim Abdullah Al Maskery, Geologist with more than 40 years' experience.

In 1974, his career began in Geology with The Open University (England) on the Oman Ophiolite Project.



FIELD TRIPS

Shuram pioneered in organizing Geological field trips for educational and commercial organizations with a continual aim for safety and quality service.

LABORATORY

In 2012, the company established an Oil & Gas laboratory after successful experience in managing PDO Exploration Laboratory since 2008.

Shuram has collaborated with specialized technical experts to provide a comprehensive geological & analytical service.

In 2018, the laboratory was relocated to an industrial size facility to better serve the market.



TEL	+968 24600919
	+968 22507615
FAX	+968 24562278
EMAIL	lab@shuramgroup.om
	Shuram@shuramgroup.om
WEB	www.shuramgroup.com

Shuram Oil & Gas

Laboratory and Coreshed

Store No. 1

Gulf International Contracting (GIC) Complex

Rusayl Industrial Area | Muscat

Sultanate of Oman

P. O. Box 194 | P. C. 134



SHURAMGROUP.COM